

THE CYCLES™

International Grand Prix Racing



**Manual for Amstrad and
Spectrum Computers**

THE CYCLES



Table of Contents

Getting Started	1
How to Set Up a Race	3
How to Choose a Class of Cycle	5
How to Choose a Track	6
How to Qualify	8
How to Drive Your Bike	8
About Your Competition	9
About the Race Screen	12
How to Take the Turns	11
Race Results	13

Created by: Distinctive Software

Conversion: Random Access

Producer: Chris Bankston

Testers: Chris Bankston, Don Marchant, Jeff Wagner

European Project Managers: Simon Pick, Dan Marchant

Manual: Jeff Hoff

THE CYCLES



The minimal requirements seem startlingly simple: a frame, two wheels, and a suitable engine. And when you watch a motorcycle sweep through a curve it can seem pure magic and art. But there is perhaps nothing more scientific and complex – and courageous – than the line a racer takes through a constant radius bend or a long right-left chicane.

Grand Prix Motorcycle Racing. It's the relationship between power, gyro effects, engine torque, G forces, every law of physics and every flaw of human nature. Put them together, call it speed, and hand-pick the 15 best tracks in the world. That's the Circuit. Only fearless, thrill-crazy scientists need apply.



Getting Started

To boot up the game, use one of the following system instructions. To exit the game to the Main Menu at any time on either system, press X.

Spectrum 128 Disk System:

- 1 Connect your joystick to Port 1 (if you want to use one).
- 2 Turn on your computer.
- 3 Insert *The Cycles* disk into the drive, label side up.
- 4 When the LOADER option appears on screen, press Enter.

Spectrum 48/128 Tape System:

- 1 Connect your joystick to Port 1 (if you want to use one).
- 2 Turn on your computer.
- 3 Insert *The Cycles* cassette into the cassette recorder, label side up.
- 4 If you are using a standard 48K Spectrum, type LOAD" and press Enter. If you have a +3, press the cursor down until 48K BASIC is highlighted, then press Return. Type LOAD" and press Enter. If you have a +2, press Enter. If you have a +2, press Enter when the LOADER option appears.
- 5 Press Play on the cassette recorder.

THE CYCLES

Getting Started (continued)

Amstrad Disk System:

- 1 Connect your joystick if you want to use one.
- 2 Turn on your computer.
- 3 At the ready prompt, insert *The Cycles* disk into the drive, label side up.
- 4 Type RUN" DISK then press Return.

Amstrad Tape System:

- 1 Connect your joystick if you want to use one.
- 2 Turn on your computer, and at the ready prompt, insert *The Duel* cassette into the cassette player.
- 3 If you are playing both a cassette and disk machine, first type 1TAPE and press Return.
- 4 Type RUN" and follow the on-screen instructions.



How to Set Up a Race

Setting up a race is easy as shaking a magnum of victory champagne. Use the joystick (or keyboard equivalents) to move the highlighter around the Choose Game Type screen (fig. 1). After you've made all of the following selections (1-4), press **Enter** to proceed to the next set-up screen.



Fig. 1 Screenshot from PC version

1 Choose the Type of Race

Highlight either the stopwatch, race track or trophy cup to choose one of the following.

Practice

Choose this option to shave seconds off your lap times, and to decide which cycles handles the best on the track. The number of practice laps you are given equals the number of laps you choose in the Laps per Race option.

Single Race

Choose one of the 15 Circuit tracks, and head for the races. First you run a solo qualifying lap (see *How to Qualify*, page 8), then you go on to the actual race. Your qualifying time determines your starting position against the other nine cyclists.

THE CYCLES

Championship Circuit

Eight tracks, 8 different races. Your cumulative record on all 8 determines your place in the World Driving Championship. (*See Circuit Results for more information*).

② Choose a Difficulty Level

Highlight the Difficulty Level Bar which runs from trike to superbike, then move the joystick left or right (or use the keypad equivalents) to shift the helmet to one of the following difficulty levels.

Difficulty – how much skill is needed to corner and shift, how tough your opponents are, and how susceptible your bike is to damage– increases from a Beginner level on the left side of the bar to the Pro level on the right.

Level 1: Beginner

Very forgiving: automatic shifting, you can't blow your engine, you can't damage the cycle if it goes off the road, and you can't spin out. Opponents treat you with kid driving gloves – you can even bump them sometimes without crashing – and you can't do wheelies.

Level 2

A little tougher: still has automatic shifting and you can't blow an engine, and you can't damage your cycle if you go cross country. Spinouts are possible from this point on. Opponents are a little less forgiving. And from now on, you can pop wheelies.

Level 3

Real driving: from now on you shift yourself. (To shift see *How to Drive Your Cycle*.) Starting now, you can damage your handling ability if you veer off the road too often, and your engine can blow. Watch for spin-outs.



Level 4

Your opponents take off their gloves. Engine destruction is quite possible. Watch your gauges, don't go over the red line, and stay on the road.

Level 5: Pro

Race against the best – and everything goes. Good luck.

③ Enter Your Name

Move the highlighter to the Enter Your Name slot, then type your name. Spelling counts.

④ Choose the Number of Laps Per Race

Move the highlighter to the Laps Per Race box and type a number from 1 to 99. That will be the number of laps in each race or practice run. Race qualification, however, is always one lap.

How to Choose a Class of Cycle

After you press **Enter** on the Choose Game Type screen, a cycle specification screen appears.

- 1 To scroll through the other two classes of cycles, move the joystick left or right (or press the keyboard equivalents).
- 2 When the cycle of your choice appears on the screen, press **Enter** to select it. You will automatically proceed to the next set-up screen.

THE CYCLES

How to Choose a Class of Cycle (continued)

There are three classes of bikes in Grand Prix racing – 500cc, 250cc, and 125cc. Only machines within each class race each other. You will race against nine different competitors in each class – 27 in all.

125cc

A one-cylinder, two-stroke flyer that hits speeds of 130 mph in sixth gear.

250cc

A two-cylinder, two-stroke, watercooled, 6-speed bullet. On a nice flat straight stretch it can top 145 mph.

500cc

Four cylinders. Six Gears. Top speed 165 mph. Pure muscle in the chicanes. Wimps beware.

How to Choose a Track

If You Selected Practice or Single Race:

You are presented with a list of the 8 international tracks in the Grand Prix Circuit (fig. 2). These include Japan, Australia, the United States, Spain, Italy, France, England and Sweden.

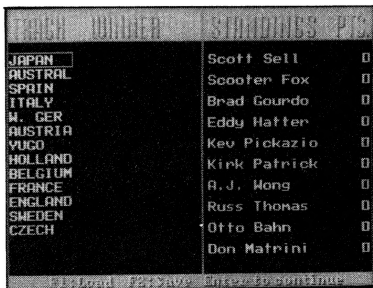


Fig. 2 Screenshot from PC version



- 1 To find out more about each track, move the joystick up or down (or use the keyboard equivalents) to highlight one of the 8 track illustrations, then move the joystick right (or press the keyboard equivalent) to select **Info** and press **Enter** (or the fire button).
 - A Track Spec screen appears. After ogling the curves, press **Enter** (or the fire button) to return to the track list.
- 2 To choose a track, move the joystick up or down the list to highlight a track, then move the joystick left (or press the left arrow key) to select **Select** and press **Enter** (or the fire button).
 - The track of your choice loads; get ready to qualify.

Note: One of the tracks – the United States – does not hold 125cc races. Therefore, the number of tracks in the 125cc Circuit is two less than the other classes. If you choose an individual race, however, you can race a 125cc bike on all 8 tracks.

If You Selected the Circuit

You are presented with the Circuit Standings screen (fig. 3), which lists the names of all the tracks, the name of the winner at each stop on the Circuit, and the Circuit's cumulative point standings. In addition, the next track in the Circuit is highlighted.



Fig. 3 Screenshot from PC version

THE CYCLES

If You Selected the Circuit (continued)

Nothing for you to do here except press **Enter**. You'll see the specs of the next track on the Circuit. Press **Enter** again and prepare to qualify.

This screen is also the place where you can save Circuits after a race. For more info about this, see page 16.

How to Qualify

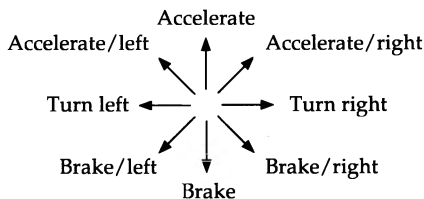
After you've selected a track (or the Circuit), you need to qualify. They don't let just anybody race. It's one lap: you against the clock. So make it good. Your time on this lap determines your position in the 10-bike starting grid.

Your performance and position in the starting grid is automatically displayed after the lap. If you don't finish (or if it takes you too long to complete the lap), a **DNQ** (Did Not Qualify) is posted beside your name. Try again, or seek other employment.

How to Drive Your Bike

You can use either the joystick or keyboard (plus the numeric keypad on the Amstrad) to steer your bike in The Cycles. (To keep things simple, however, this manual refers to only the joystick. Check out the keyboard diagrams on page 9 for equivalent controls). To choose your control from the Game Selection screen:

Joystick





- To accelerate or brake, move the joystick forward or back.
- To steer the cycle to the left and right, move the joystick to the left or right.
- To upshift, press the fire button while accelerating; to downshift, press the fire button while braking.

Alternate Keyboard Controls

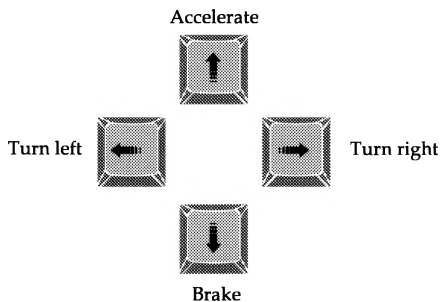
Q = Left

W = Right

K = Brake

L = Accelerate Turn left

P = Panic



- To upshift, press Space Bar while accelerating; to downshift, press Space Bar while braking.

On the Amstrad the Cursor up/down can be used to accelerate/decelerate and cursor left/right can be used to steer.

About Your Competition

Each cycle class features nine different opponents who want to keep you in the back of the pack. They differ in ability and temperament: some are aggressive, some more conservative; some race a highly-strategic race, others are more spontaneous; some are masters of their bikes, others still need a little work.

THE CYCLES

This driver roster ranks your opponents from the best in ability to the novice for each class:

125cc Circuit					
Bike No.	Name	Nationality	Bike No.	Name	Nationality
88	Scooter Fox	English	2	A. J. Wong	Chinese
27	Brad Gourdo	Italian	66	Russ Thomas	American
01	Eddy Hatter	American	05	Otto Bahn	German
12	Kev Pickazio	Italian	09	Don Matrini	Italian
4	Kirk Patrick	Irish			

250cc Circuit					
Bike No.	Name	Nationality	Bike No.	Name	Nationality
88	Max Gray	English	2	Jeremy Steele	American
27	Frank Delrio	Spanish	66	Pierre Roi	French
01	Greg Neumann	American	05	Tony Castle	Scottish
12	Kjell Anders	Swedish	09	Nigel Crym	English
4	Claude Leduc	French			



500cc Circuit					
Bike No.	Name	Nationality	Bike No.	Name	Nationality
88	Don Lee	Canadian	2	Alex Gold	Canadian
27	Tom Matthews	American	66	Joe Campbell	American
01	Ian Smythe	English	05	Koji Nagata	Japanese
12	Norman Green	Australian	09	Andy Buck	Welsh
4	Jose Brio	Spanish			

About the Race Screen

Tachometer

The large gauge at the top. A device that registers in thousands the revolutions per minute (RPMs) of your crank shaft. The bigger the number, the harder your engine is working. If it works too hard – the tach bar climbs into the danger zone, or **red lines** – you can blow it up. So keep an eye peeled when you're shifting around 11,000 RPMs.

Handle Bars

To steer your bike, move the joystick to the left or right, or press the keyboard equivalents.

Speed Gauge

A digital readout in miles per hour is located in the top central position of your screen. If you want to increase speed – accelerate – move the joystick forward or press the appropriate key on the keyboard. To put on the brakes, move the joystick back or press the appropriate key on the keyboard. (For a full explanation of accelerating and braking, see *How To Drive Your Bike*.)

THE CYCLES

Gear Readout

This is located just below the speed gauge. You have six gears.

Map Box

This is located in the top left section of your screen. Watch this. It lets you anticipate what type of road looms ahead – curves, straightaways, chicanes.

Race Information

Everything you need to know how badly you're getting beaten is located in the top right hand section of your screen.

P	Your current race position
L	Your current lap
Top Clock	Your cumulative time for this race
Lower Clock	Your time for the current lap

How to Take the Turns

Hard-core driving is done in the turns, or on the approaches to the turns. That's where you're most likely to run off the road – and win or lose the race. The basic tactic is to study each track well and pick your line through the curves well in advance. Without giving too much away, it's safe to say that the best way to corner in a real motorcycle race is also the best way to corner in The Cycles. We leave it up to you to find that skill. (But one hint: brake into a corner, accelerate out.)

All turns have striped borders. Yardage markers of 150, 100 and 50 yards are often placed on the outside approach to every turn to help you anticipate them.



Race Results

After Every Race

A screen appears that shows you how well you performed against the competition. It gives you some individual stats for that race – your overall time, highest speed and average speed – as well as Best Lap stats: which lap was your best, how fast you ran it, and how long it took you.

If your best average lap time is the best ever for that track, it is automatically recorded on that track's information screen under Lap Record. Every track has its own info screen.

If you're running the Circuit, press the fire button or **Enter** to see your cumulative point earnings on the Circuit Standings screen.

Circuit Results

The Circuit Standings screen appears after every Circuit race. It posts the cumulative point totals for each racer, tells you the winner at each race track, and highlights the destination for the next race.

Your name appears in the standings column. All finishers receive points (see below). If you don't finish at all, a **DNF** (Did Not Finish) appears beside your name.

Place	1	2	3	4	5	6	7	8	9	10
Points	20	17	15	13	11	10	9	8	7	6

Race points are accumulated for each race throughout the Circuit. The racer with the highest cumulative score after the 8 races wins the title of World Driving Champion.

To create a new race, press **Enter** and you return to the first set-up screen. If you're racing the Circuit, press **Enter** and you move to the next track.

THE CYCLES



ACCOLADE CUSTOMER SERVICE IN ENGLAND: 44-1-738-1381

If you need help with this — or any other — Accolade product, please give us a call. Be sure you are at your computer when you call. We'll do everything we can to solve your problem or answer your question. Or write to us at:

Accolade Europe Ltd.
Attn: Customer Service
50 Lombard Road
London SW11 3BU
England



DO YOU WANT TO BACK-UP YOUR DISK?

We know you're concerned about disk damage or failure. So feel free to make a back-up of the game. See your computer manual for details about saving disks. If your **off-disk protection scheme** somehow gets destroyed, **send us the remains**, and we'll give you a replacement.



YOUR DISK CARRIES A 90-DAY WARRANTY

Accolade, Inc. warrants for a period of 90 days from the date of purchase by the original purchaser of the Software that the recording medium on which it is recorded will be free from defects in materials and workmanship. Defective media which has not been subjected to misuse, excessive wear or damage due to carelessness may be returned during the 90-day period without charge.



LICENSE AGREEMENT and LEGAL MUMBO JUMBO

This computer software product (the "Software") and the user manual are provided to the Customer under license from Accolade, Inc. and are subject to the following terms and conditions, to which the Customer agrees by opening the package of the Software and user manual and/or using the Software. Granting of this license does not transfer any right, title or interest in the Software or the user manual to the Customer except as expressly set forth in this License Agreement.

The software and the user manual are copyrighted 1990 by Accolade, Inc. All rights are reserved. Neither the Software nor the user manual may be duplicated or copied for any reason. The customer may not transfer or resell the Software or user manual. All registered trademarks and names are properties of their respective owners.

The remedies provided above are the Customer's sole and exclusive remedies. In no event shall Accolade, Inc. be liable for any direct, indirect, special, incidental or consequential damages with respect to the Software or the user manual. Except as provided above, Accolade, Inc. makes no warranties, either express or implied, with respect to the Software or the user manual, and expressly disclaims all implied warranties, including, without limitation, the warranty of merchantability and of fitness for a particular purpose.

ACCOLADE™
The best in entertainment software.™

05123
11/89