

RASPUTIN THE CRUSADERS QUEST

You must destroy the Jewel of the Seven Planets which is the power source of the Spirit of Rasputin. To reach the Jewel you must neutralise the eight spells that have been cast in Rasputin's name.

To neutralise the spells, traverse the courtyard of your dark side and enter the nether world of the Seven Planets, crossing from dimension to dimension by means of the spells cast by the Lord of Chaos to prevent the escape of Rasputin's spirit, which is threatening to cross the barriers of time.

You have the magic power of your sword and shield, but their power wanes like a candle every time you use their might.

Find the stones with the mark of Rasputin and by stepping on them you will absorb their power into your sword and shield.

Absorb the power of all the stones in a dimension and the wrath of

Rasputin's mind is revealed in the form of a creature from the dark side. Destroy this creature and it will be transformed into a spell-stone inscribed with a rune of power. These runes were cast by the Lords of Light to aid you in your quest and may be absorbed into your soul upon contact.

The most important spell is that of "the Eyes of Heaven". This spell will protect you from the spirit of Rasputin's Evil Eyes and allow you access to the boxes that neutralise the eight spells cast in Rasputin's name. But the power of the Lords of Light will only protect you if the colours of the dimension are in harmony with the spell. Step on these boxes to reverse the spells cast in Rasputin's name from the Dark Side to that of the Light.

Until you achieve the Quest, you are lost in the eternity of time, your life force being drained by the creatures of the nether world.

CONTROLLING YOUR CRUSADER

	KEYBOARD
Turn LEFT:	Q
Turn RIGHT:	W
Walk:	O
Jump:	P
Use SHIELD:	M
Use SWORD:	M and P

	JOYSTICK
LEFT	LEFT
RIGHT	RIGHT
UP	UP
FIRE	FIRE
DOWN	DOWN
DOWN and FIRE	DOWN and FIRE

PAUSE

The whole game can be paused by using the SPACE key. Use ENTER/RETURN to unfreeze the game.

QUIT

You may quit the game at any time by using the "1" key.

LOADING INSTRUCTIONS

SPECTRUM

Type **LOAD** ""
Press the **ENTER** key.
Press the **PLAY** button on your recorder.

COMMODORE

CASSETTE
Hold down the **SHIFT** key and press the **RUN/STOP** key.
Press the **PLAY** button on your recorder.

DISC
Type **LOAD "*" , 8.1**
Press **RETURN**.

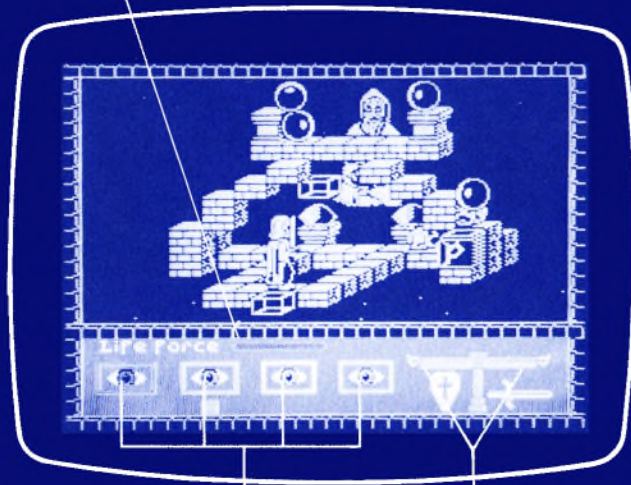
AMSTRAD

CASSETTE
CPC 6128, 664 and CPC 464 with disc.
Hold down **SHIFT** and press the **@** key.
Enter **TAPE** then press **RETURN**.
Now follow the following CPC 464 cassette loading instructions.

CPC 464 CASSETTE LOADING
Hold down **CTRL** and press the small **ENTER** key. Press the **PLAY** button on your recorder.

DISC
Enter **RUN "DISC"**
Press **RETURN**.

THE LIFE FORCE INDICATOR shows your current state of health.



SPELL HARMONY INDICATORS.

THE MAGIC POWER INDICATORS show the level of power remaining in your sword and shield.

WARNING:

Copyright subsists in all Firebird software, documentation and artwork. All rights reserved. No part of this software may be copied, transmitted in any form or by any means. This software is sold on the condition that it shall not be hired out without the express permission of the publisher.

If this program is faulty and fails to load please return it to the address below and it will be replaced free of charge and postage refunded. This does not affect your statutory consumer rights.

No part of this book may be reproduced by any means without the prior consent of the copyright holder. The only exceptions are as provided for by the Copyright (photocopying) Act or for the

purpose of review.

Rasputin was written, designed and programmed for the Spectrum and Amstrad by Paul Hibbard. Commodore conversion by LT SOFTWARE.

Loading screens on all versions by Simon Jay. Spectrum protection by SOFTLOCK™

Firebird and the Firebird logo are trademarks of British Telecommunications plc.

Package Design by The FTF Agency. 01-388 4832

Published by FIREBIRD SOFTWARE, Wellington House, Upper St. Martins Lane, London WC2H 9DL.



 FIREBIRD IS A TRADEMARK OF BRITISH TELECOMMUNICATIONS plc.

FIREBIRD SOFTWARE · WELLINGTON HOUSE
UPPER ST MARTIN'S LANE · LONDON WC2H 9DL

