

=====

..... SOURCE MATERIAL AND INSPIRATION .....

=====

GAMING CONCEPT:

NAME: Mega Force

By Tehkan 1985

SPRITES:

NAME: Mega Force

By Tehkan 1985

LOADING SCREEN, TITLE & FONTS:

Font adapted from original

By Karl McNeil

Material from RetroInvaders

By Karl McNeil

MUSICAL SCORES:

NES: StarForce (via MusicBox/PT3)

By Climacus/KgMcNeil

DelicateOaz (via MusicBox/PT3)

By emax/trsi 1994

DESIGN SIGNIFICANCES:

Cover art illustration

By Tehkan 1985

**RETRO FORCE**

by Climacus & KgMcNeil 2017

Produced and designed by S♥T♥A♥R

Distributed by Matra Computer Automations

Uniform Resource Locator

[www.matranet.net](http://www.matranet.net)

=====

:::::: TOOLS USED :::::

=====

FOR SOUND:

Beepola v1.00.01 By Chris Cowley  
AyfxEdit v0.6 By Shiru 2017  
AutoSiril Midi2UT v1.0 By Siril 2012

FOR GRAPHICS:

ZX-PaintBrush v2.6.4 By Claus Jahn 2017  
SevenUp 1.20 By MetalBrain 2006  
Bmp2Scr Exp v2.11a By Leszek Chmielewski 2004  
NAME32 v0.34 By NAME Team 1998

FOR EMULATION:

SpecEmu v3.1 By Mark Woodmass 2015  
Spectaculator By Jonathan Needle 2011  
Emu2Win 2.8 By Vladimir Kladov 2006

FOR ASSEMBLY:

Pasmo v0.5.4.Beta2 By Julian Albo 2005  
ZX-BlockEditor v2.4.3 By Claus Jahn 2017

FOR COMPRESSION:

Z802TAP v3.0 By Lunter 1994  
Exomizer v3.0 By MetalBrain 2012

CUSTOM TOOLS:

Mapeador.exe v1.0 By Climacus 2017

FOR DESIGN:

InDesign 2.0.1 By Adobe Systems Incorporated 2002  
Illustrator CS2 By Adobe Systems Incorporated 2005  
Photoshop CS2 By Adobe Systems Incorporated 2005  
Vista Previa 2.1.0 By Apple Computer, Inc. 2003  
TextEdit 1.3 By Apple Computer, Inc. 2003  
Firefox 2.0.0.16 By Mozilla Foundation 2006

.....  
::: GAME PROGRESSION :::  
.....

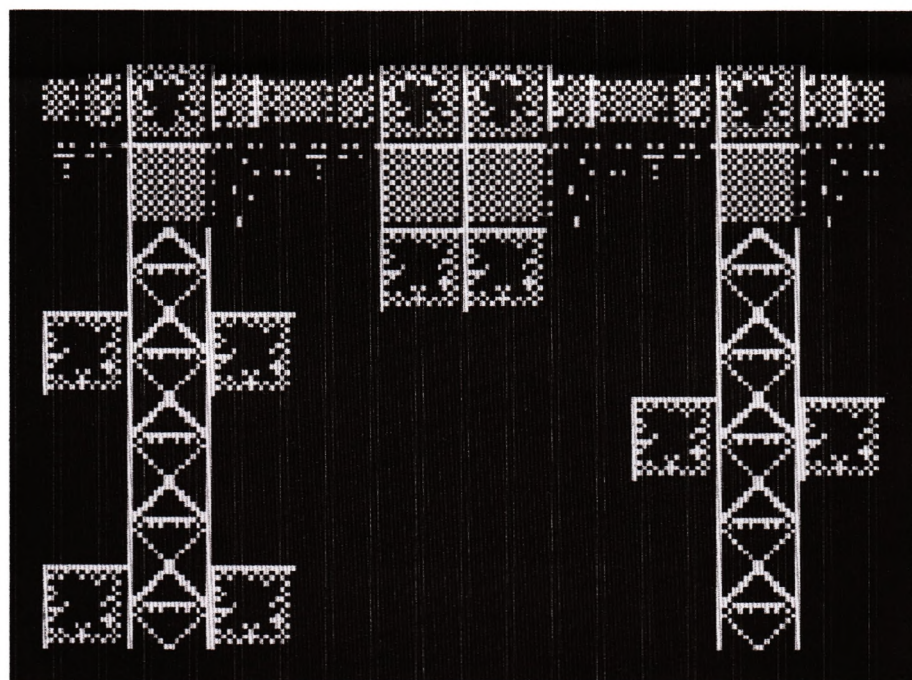
24 Sectors are believed to exist just prior the area believed to house the species known only as, "The Unity". Their demise won't be accomplished by your craft though. You are tasked with clearing the way to secure safe passage for those that will fly ahead...

The first 11 sectors are partially known by navigational intelligence gathered over the last nine years, but sectors beyond LAMBDA are essentially unknown to humankind. It is believed that sectors MU onwards are color coded according to function, representing industrial, cybernetic and organic environments, but little can be said with certainty at this stage...

Beyond sector Omega, nobody can say what awaits...

Thankfully, it won't be your team that has to conduct that level of infiltration...

Good luck soldier... you'll need it...



.....  
::: Opposing the Odds :::  
.....

R-Type never made it this far out into the galaxy, so don't expect heavy armaments in this game... ☹ That being said, your not totally defenceless... Flashing pickup icons do exist...



Typically, picking one of these up will grant one of the following:

- 1) **Auto Fire** - Perhaps the most useful asset your player can have, and the only weapons upgrade in this game.
- 2) **Smart Bomb** - An EMP blast that will immediately destroy all kinetic cybernetic craft.
- 3) **Ground Blast** - A smart bomb to clear away all ground based industrial targets.
- 4) **Bonus Points** - Not immediately useful... but save enough of these, and you might just get an extra life...

.....  
::: BASIC GAME PLAY TIPS :::  
.....

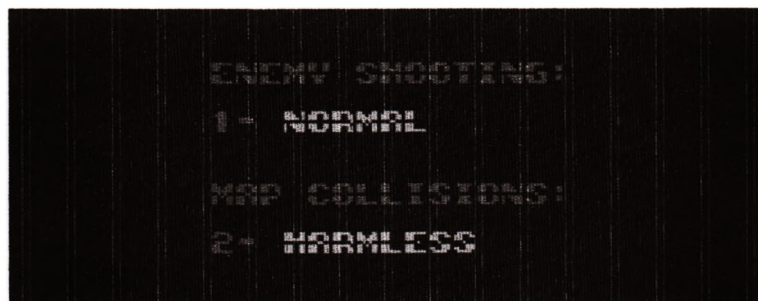
- Don't be afraid to dive into enemy fire to avoid enemy ships.
- Sacrificing a life, to collect missed targets is worth it...
- Memorize those attack patterns!
- Players who linger at the back, risk everything in later levels.
- Weaving & dodging become essential in later game play levels.
- Get up close & personal when confronting level end guardians.
- Choose wisely between enemy craft or ground based targets...

.....  
: : : : ENERGY & LIVES : : : :  
.....

By default, this game involves both energy drainage and loss of life systems during play. This means contact with enemy shots will drain shield strength, but won't necessarily prove fatal until your shield runs dry. Direct collision with enemy craft, however, will prove immediately fatal. The number of ships you have remaining, and a visual representation of shield strength, can both be seen together on the bottom right of your control panel:



For die-hard players with more skill, the options screen allows users to determine difficulty of game play by tinkering with how the game treats enemy shot and target collisions. Enemy shots can be made fatal, faster & more accurate, while map target collision detection can be turned on to add more avoidance to game play.



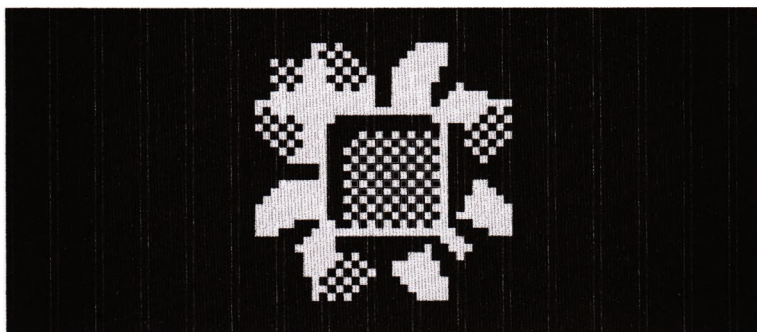
An additional option 3 is included in the 128k version of this game, to control gaming speed. Gaming speed can be slowed down to 0, or increased to 6 for maximum speed (the default is normally 3).

The 48k version of this game runs definitively FASTER than the 128k version, even on a 128k maximum game speed setting of 6...

*Thus 48k users actually get a faster game than 128k users here.*

The speed option in the 128k version is added for those who prefer gardening, or like to knit socks while playing arcade games... ☺

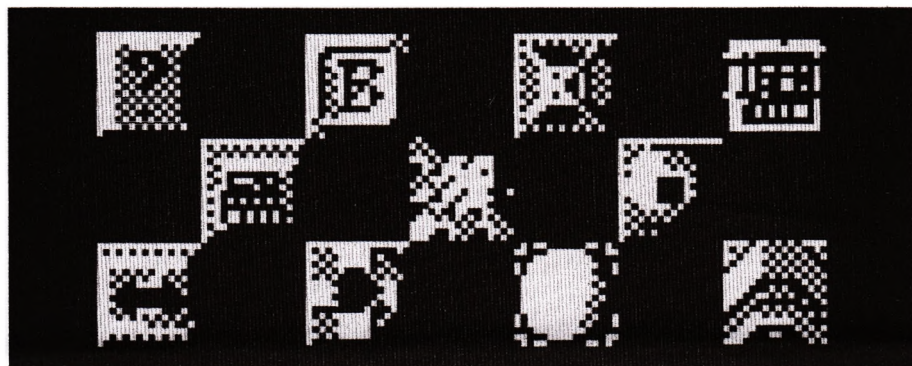
Failure to destroy the designated number of targets before level end, will force the player to have to replay that sector from the beginning again. Success in destroying all such targets however, will activate the sector guardian, who must be destroyed before proceeding further...



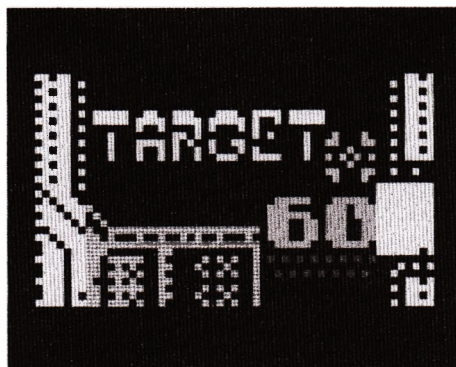
.....  
THE AIM OF THE GAME  
.....

Before the big boys can find their way into this part of the galaxy with their explosive payloads, your job is to clear away all targets and resistance found within the next 24 sectors ahead.

Targets are typically embedded within the sectors infrastructure, and can be many and varied. But this isn't a sight seeing tour solider!!



Each of the 24 sectors, Alpha to Omega, have a designated number of targets that must be destroyed, before you can get a crack at destroying that sectors guardian ship. This designated number, representing a percentage of the sectors industrial infra structure, and can be found on the right hand side of your control panel - for instance:



And therein lies the problem: we have no way to verify whether the payload had been delivered, without compromising our assets.

Which brings us to Plan B and the activation of our sleeper cell...

On this glorious day, we are to lead an assault team deep into enemy territory to take out as much of their infrastructure as possible. Anything we destroy, Alpha won't have to; anything we leave, might compromise their ability to deliver the payload. Ultimately, we are the pointman for a human incursion that will finish the job. We are to clear the way for logistic craft, which will later seed the area with hardware that will lay dormant for any surviving Alpha team members who do make it across. Failing that, we are the last chance for mankind to strike deeply and directly at The Unity. Ideally, Alpha team will finish the job; failing that, we'll at least go down in history as those who extended the Peace in our Time...



## PLAN "B"

"Alpha Squadron are gone..."

Silence descended on the hall, as we took in the enormity of what was being broadcast from an Earth-based channel that had seen little action over these last 10 years. Our cell had waited incognito, inactive, but attentive for the best part of that time, waiting for a day such as this. Ten years of waiting was agony, but not as painful as that 3 second delay.

The delay, of course, was an inevitable side effect of temporal distortion when communicating across such vast distances... Communication, as always, was to the point, and of necessity, infrequent. Today, however, marked something different.

"...the last of their ships were swallowed by the event horizon..."

It took only half a second for us to process that message before the hall erupted in jeers of celebration.

I could barely hear over the jubilation of my comrades behind me, finding it necessary to shout over them for confirmation.

"We won?... Mission successful?..."

Even before he uttered the two words that would prove to be my correction, and the reason for this mission, we fell silent again at the sight of our commanders serious glare.

"Phase One...", was all he said.

Operation "Silent Night", as we all knew consisted of two phases. The first of these involved the wholesale destruction of a string of mother ships guarding the infamous wormhole. For almost half a century, mankind endured continuous attacks originating beyond that celestial gate, from a faction known only as "The Unity". Phase One meant we got to finally nail that door shut.

Phase Two, however, was an entirely different matter. Phase one bought us peace, but only the completion of Phase Two could sustain it. A "Peace that will last" meant only one thing to our kind - radical death to "The Unity". Such a Final Solution is a tall order for an under equipped cell such as ours, but was well within the remit of the Alpha Squad, whose main objective, was the delivery of a warhead that would make that possible.

Ah, the warhead... What a marvellous weapon... Salvaged from 40 years of alien technology meant for our destruction, scientists had constructed something that could effectively wipe away a whole solar system... Its use was never going to be something our species could witness first hand though...

## ~~~~~ LOADING INSTRUCTIONS ~~~~~

The 48k version of this game is custom made for the original Sinclair 48k ZX Spectrum. Due to timing issues, it is not as compatible across different ZX systems as the 128k version of this game.

ZX users with 128k or more, should follow approach number 1 to load their game. 48K Sinclair users can follow approach number 3. 48K users with modified roms (eg: Open SE, Gosh Wonderful, etc), or 128k users preferring BASIC over menu use, can follow approach number 2 below:

Follow the approach for your system below, before starting the tape:

```
*****  
** [1] Using the Menu TAPE LOADER option **  
*****
```

This option is most commonly used by ZX 128k based systems.

- Turn on, or Reset your system.
- Once the menu screen appears, Press ENTER, to select "Tape Loader"

If the "Tape Loader" option wasn't already highlighted, then it can be by using the Cursor keys to select it, prior to hitting the ENTER key.

```
*****  
** [2] Using a Non-Tokenized BASIC editor **  
*****
```

This option is for systems using alternative ROMs, eg: like SEBasic.

- From within BASIC, type LOAD ""
- After typing this, press ENTER

NB: Quotation marks are usually typed with Symbol Shift and the P key.

```
*****  
** [3] Using the 48k BASIC Editor to Load **  
*****
```

To use the LOAD "" command, follow these instructions:

- Type "J" [for LOAD]
- Press Symbol Shift + "P" for quotation mark
- Press Symbol Shift + "P" again for another quotation mark
- Press ENTER

For all approaches, leave the tape running until the end.  
When the tape is done, press any key to bring up the gaming menu...

## ZX SPECTRUM 48/128K

[illegible]

Published by Natra Computer Automations