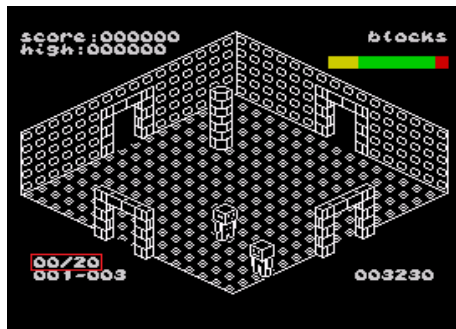
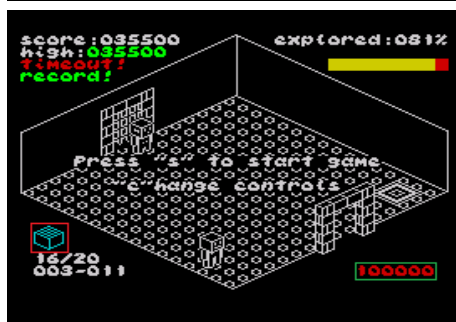


ZX Robots for Sinclair ZX Spectrum 48K

You are inside a factory that is operated by robots.



To win, you simply have to repair the central computer by allocating 20 pieces (stars on the map) to some of its terminals so that it can regain control of the remaining robots.



There is a limited amount of time before the computer becomes unreparable (100000 indicated on the bottom right-hand corner of the screen). The faster you can complete your mission the more points you will gain.

You can only transport one piece at a time (indicator on the middle left of the screen).

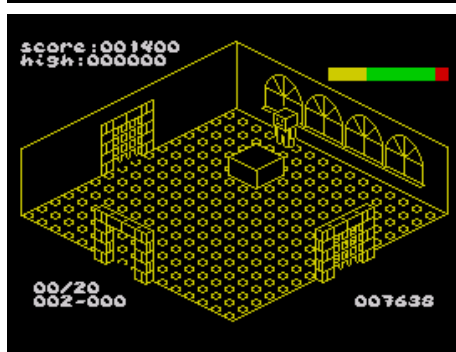


You need to move quickly to avoid the other robots, who will try to rob your energy (energy bar on the top right of the screen). If you run out of energy you won't be able to complete your mission.



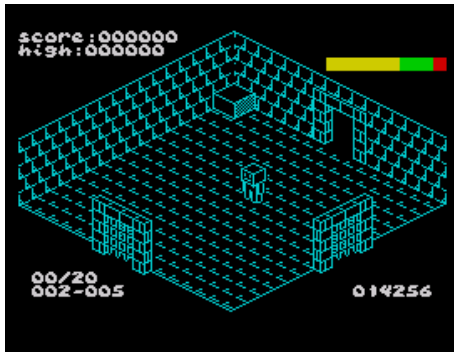
You can also destroy the other robots to clear your path and gain extra points.

To destroy the other robots, you will need to use the boxes that you will find in some of the rooms. You can push the boxes against the robots (push + press the fire button). The smaller boxes will go faster and will be easier to aim.

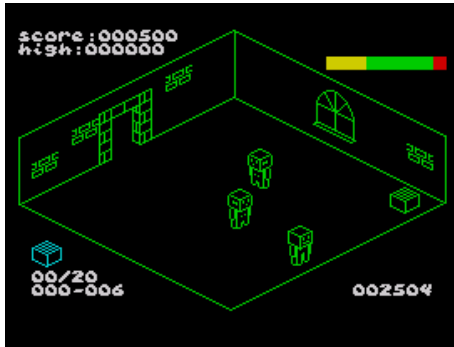


You can also push the boxes against the railings that protect some of the doors and, in this way, clear the entrance. You need to aim for the centre of the door, if not, the box will bounce against the walls and the door won't open. It is more difficult to aim with the larger boxes, but it is always possible.

Advice:



To manage the boxes near a wall, throw them against the wall (push + press the fire button) and move in the opposite direction. This will make them bounce and stay in the middle of the room.

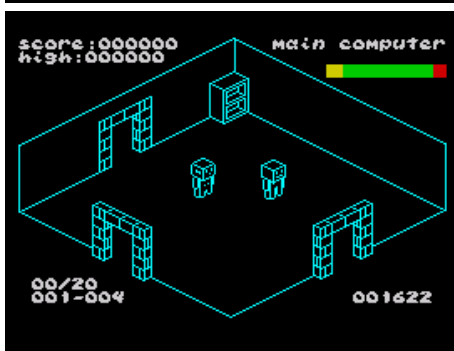


The rest of the robots are a little bit slower than you, but avoid standing still or they will quickly catch up with you.



The room code that appears at the bottom left of the screen will help you to find your location on the map.

You will find some boxes which you can use to recover energy and add a little more time. The points where they may appear are marked on the map with a lightning bolt, but they won't always be available.



There are four terminals where you can allocate pieces. Use the one closest to you, otherwise you won't have enough time.

Controls:

